



SCIGATE AUTOMATION (S) PTE LTD

No.1 Bukit Batok Street 22 #01-01 Singapore 659592

Tel: (65) 6561 0488

Fax: (65) 6562 0588

Email: sales@scigate.com.sg

Web: www.scigate.com.sg

Business Hours: Monday - Friday 8.30am - 6.15pm

With GP-Pro EX

INDEX

01. Control and monitor production site screens from the office
02. Solve problems easily with recording and playback functions
03. Use RPA function to solve problems instantly using only a GP unit
04. Display production site alarms and device addresses in a PC browser window
05. Use an off-the-shelf USB flash drive to collect and distribute production data

■ For Equipment Designers

Adding Value to Equipment Master Edition



Control and monitor production site screens from the office

Solution Rating



90%

Q

QUESTION ≪≪

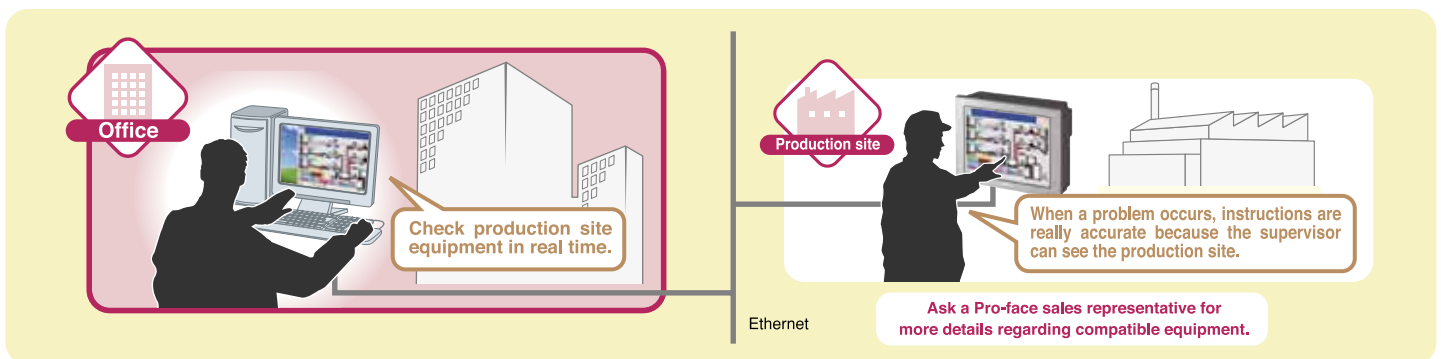
Have you given up on installing a remote monitoring system because it seems too hard?

A

Pro-face's solution ≪≪

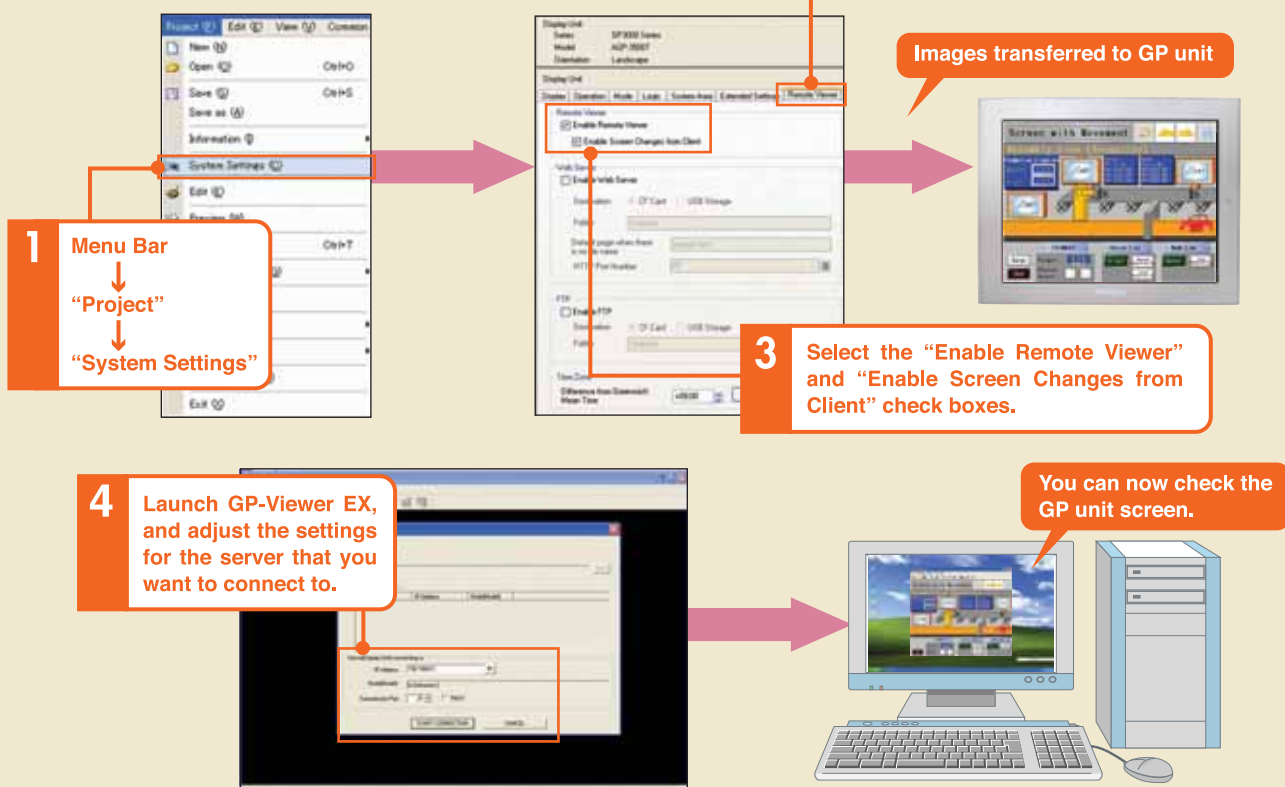
With GP-Viewer EX and an Ethernet connection, you can remotely control and monitor the production site and get a good picture of what is happening from your office PC.

Pro-face offers REMOTE MAINTENANCE FROM DISPLAY ::::::::::::::::::::



Easy operation

Show Data and Operate Display



It is necessary to purchase a separate license in order to use GP-Viewer EX.

02 Solve problems easily with recording and playback functions

Solution Rating



100%

Q

QUESTION ≪≪

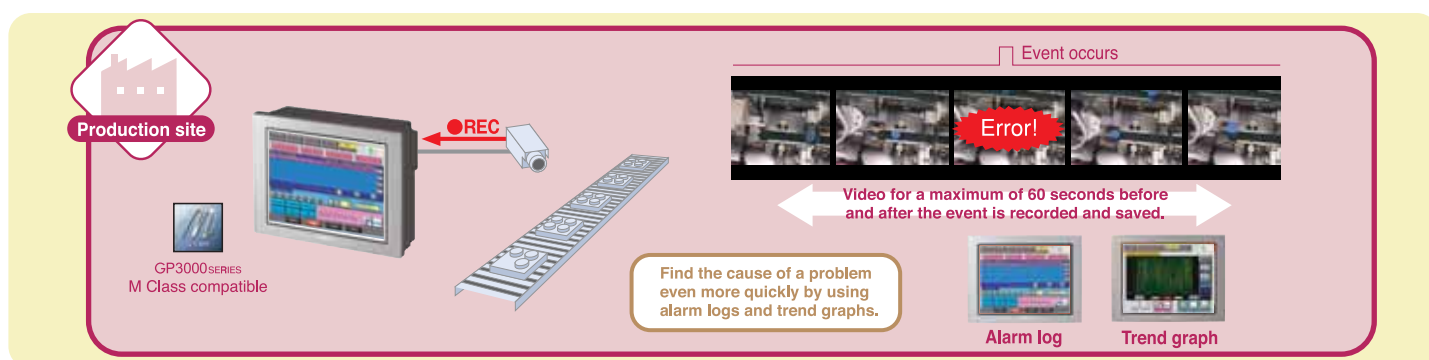
Are you spending a lot of time investigating the causes of unexplained errors by installing video cameras or relying on the intuition of experienced workers?

A

Pro-face's solution ≪≪

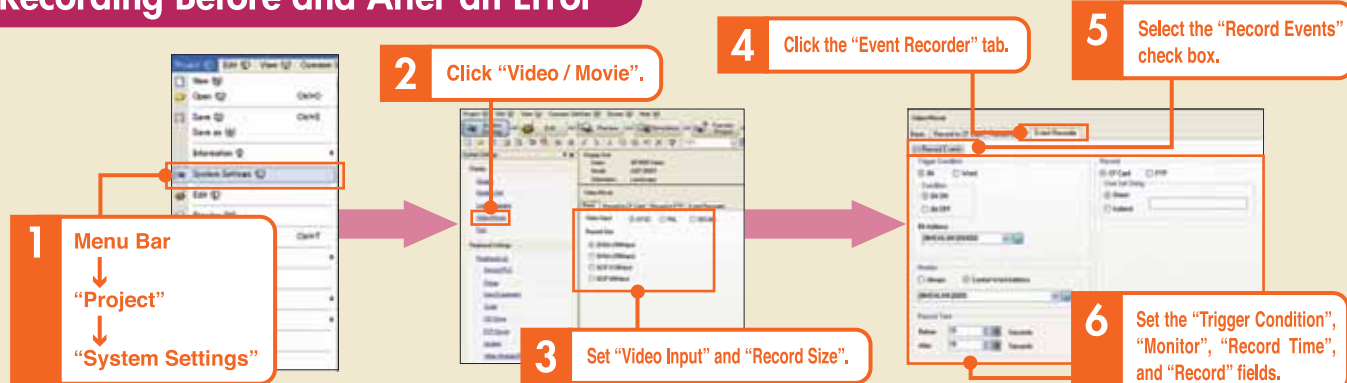
Pro-face systems can record video around the time an error occurs and save it for playback at a later time, making it easy to grasp what went wrong.

Pro-face offers RECORDING AND PLAYBACK OF VIDEO BEFORE AND AFTER ERRORS

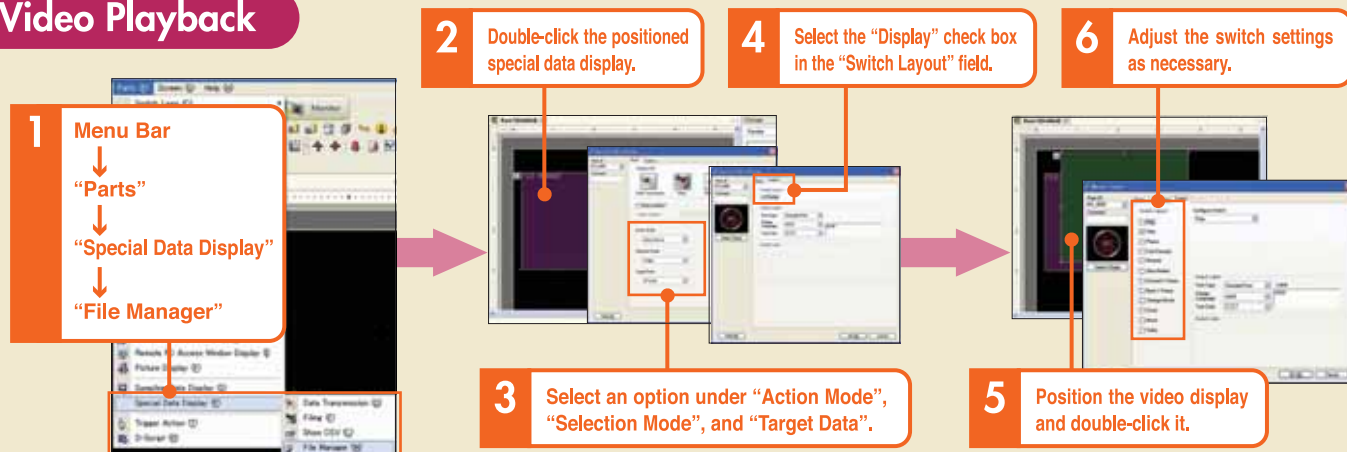


Easy operation

Recording Before and After an Error



Video Playback



03

Use RPA function to solve problems instantly using only a GP unit

Solution Rating



90%

Q

QUESTION ≪≪

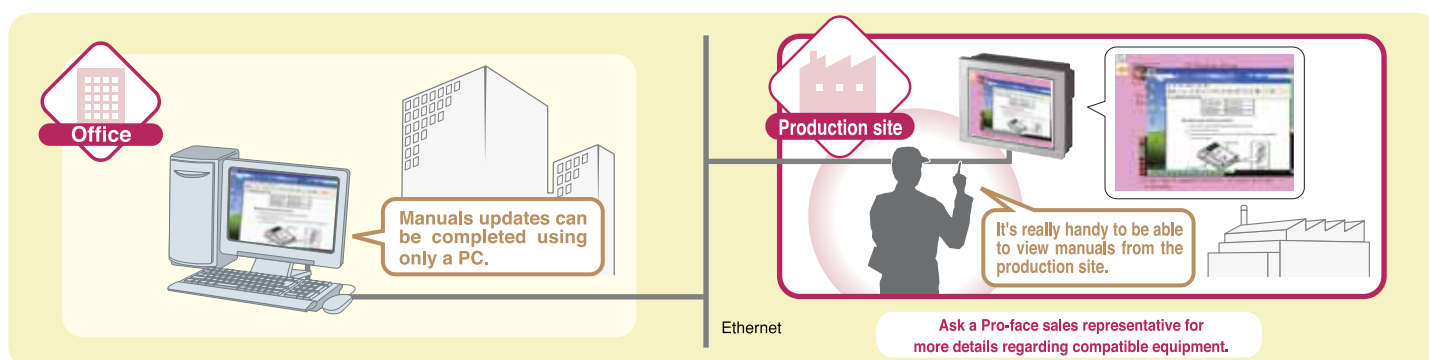
Do you have equipment in a production site where nothing is allowed to be taken inside, which causes big problems when you need to refer to a manual in the event of trouble?

A

Pro-face's solution ≪≪

You can access an office PC from the production site in order to display and use manuals and other data.

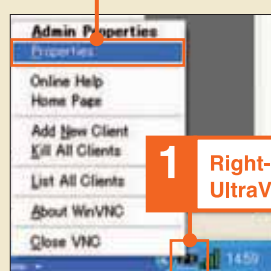
Pro-face offers PROBLEM SOLVING USING ONLY A GP UNIT



Easy operation

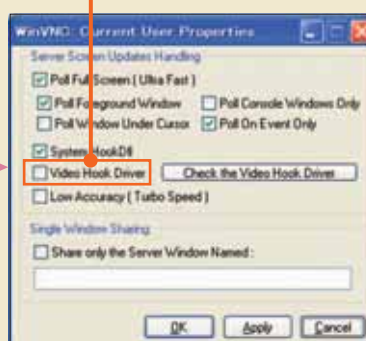
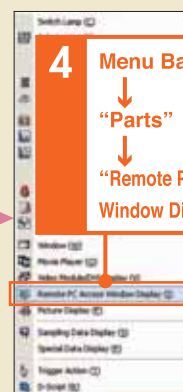
Displaying PC Images on a GP Unit

2 Select "Properties".

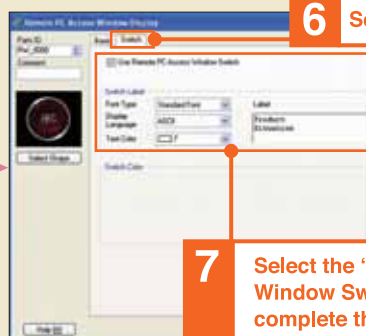


1 Right-click the UltraVNC icon.

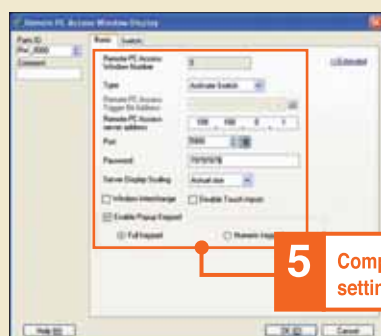
3 Clear the "Video Hook Driver" check box.

4 Menu Bar
↓
"Parts"
↓
"Remote PC Access Window Display"

6 Select the "Switch" tab.



7 Select the "Use Remote PC Access Window Switch" check box and complete the switch settings.



5 Complete the basic settings.

Screen transfer

It is necessary to purchase a separate license in order to use the RPA function. UltraVNC is included on the install CD.

SECTION

04

Display production site alarms and device addresses in a PC browser window

Solution Rating



80%

Q

QUESTION «««

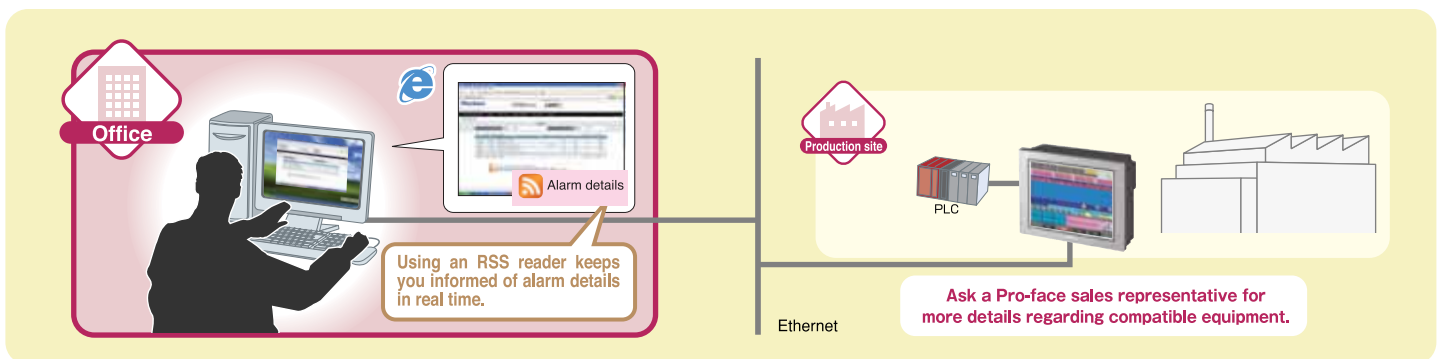
Have you spent lots of time and money introducing a remote monitoring system?

A

Pro-face's solution «««

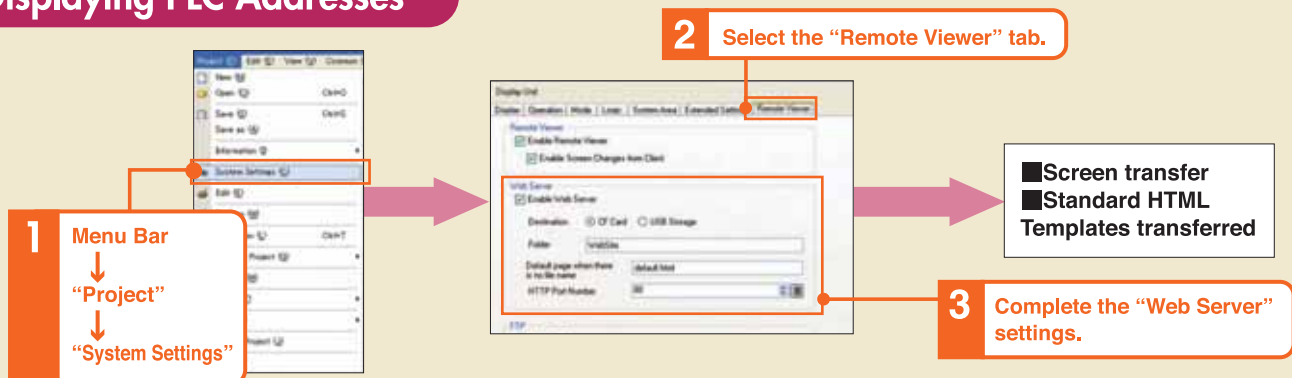
Using a web server lets you perform monitoring (device monitors and alarm monitoring) via Internet Explorer.

Pro-face offers MONITORING FROM A WEB BROWSER

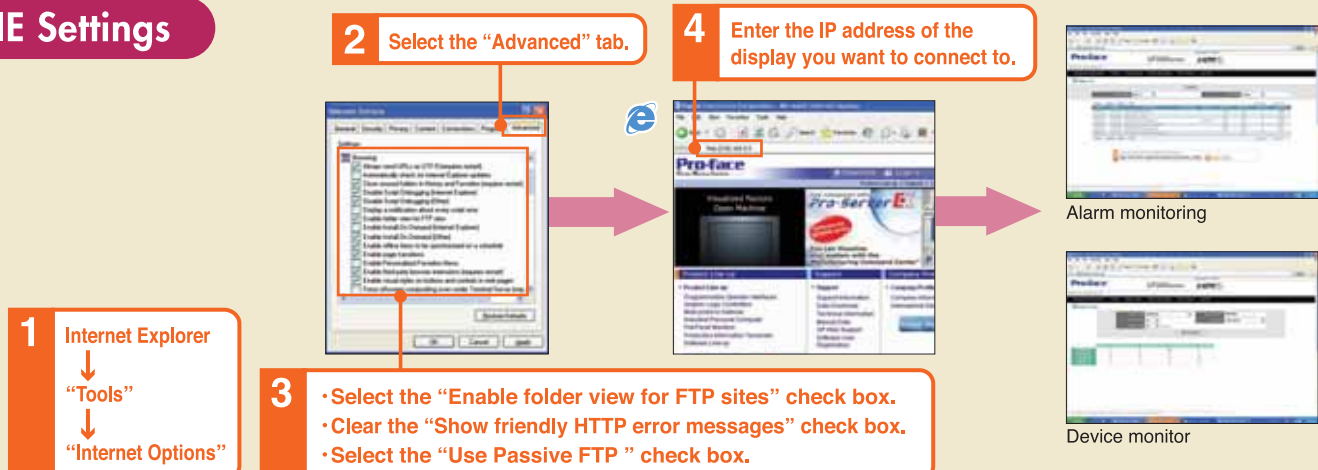


Easy operation

Displaying PLC Addresses



IE Settings



05

Use an off-the-shelf USB flash drive to collect and distribute production data

Solution Rating



100%

Q

QUESTION ≪≪

Do you think that you have to create a complicated network and system in order to collect and distribute production data?

A

Pro-face's solution ≪≪

Use a GP unit with a USB master to collect and distribute data using only a USB flash drive.

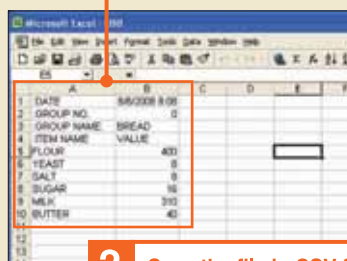
Pro-face offers **COLLECTION AND DISTRIBUTION OF PRODUCTION DATA VIA USB FLASH DRIVE**



Easy operation

Distributing Recipes

- 1 Create recipe data in Microsoft Excel.

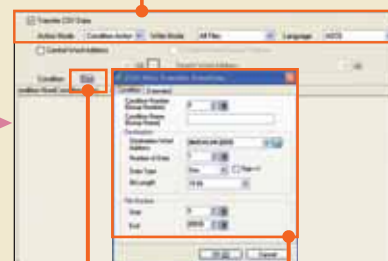


- 2 Save the file in CSV format on a USB flash drive.



- 3 Menu Bar
↓
"Common Settings"
↓
"Recipe"
↓
"Transfer CSV Data (Condition)"

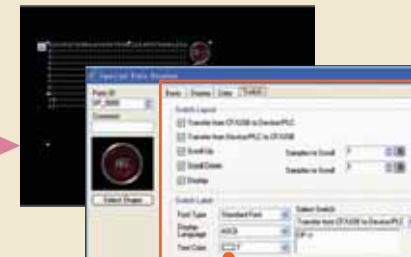
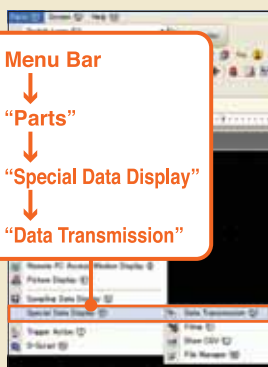
- 4 Select the "Transfer CSV Data" check box, and select an option under "Action Mode", "Write Mode", and "Language".



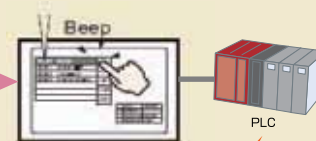
- 5 Click "New".

- 6 Set the CSV data transfer conditions.

- 7 Menu Bar
↓
"Parts"
↓
"Special Data Display"
↓
"Data Transmission"



- 8 Double-click the positioned special data display, and complete the "Display", "Color", and "Switch" settings.



D100	400
D101	8
D102	8